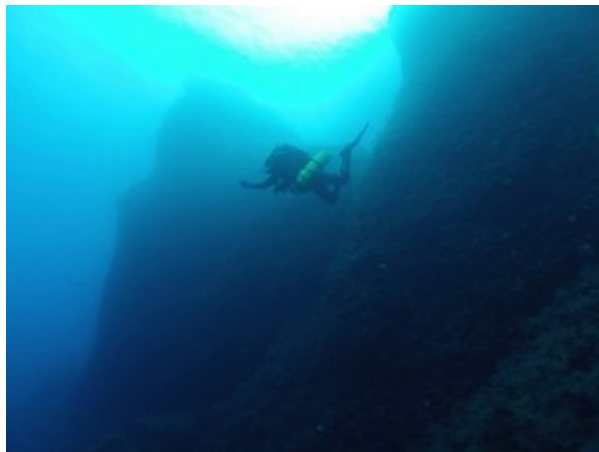


Mis en ligne par Revue de presse, le 30 janvier 2013 (dernière m.a.j. : 28 février 2018)



*By: Stephanie Pappas, LiveScience Senior Writer — A dive to the undersea cliff where a famous Roman shipwreck rests has turned up either evidence that the wreck is enormous — or a suggestion...*

A lire sur <http://www.livescience.com/26009-antikythera-roman-shipwreck-two.html>